

OUR MOST USED ROMAN SHADES STYLES



1

PLAIN ROMAN



by. Centered by Design



2

RELAXED ROMAN



by. Centered by Design



3

HOBbled SHADE



by. Hunter Douglas Design Studio



4

OUTSIDE MOUNT
ROMAN

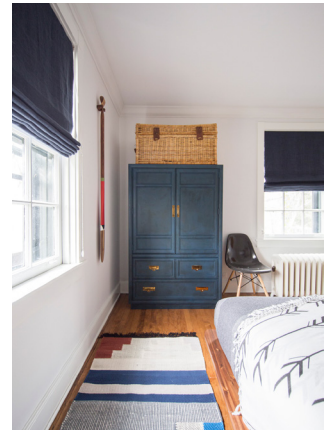


by. Centered by Design



5

INSIDE MOUNT
ROMAN



by. Centered by Design



CENTERED BY DESIGN

OUR MOST USED ROMAN SHADES STYLES



6

BANDED ROMAN



by. Centered by Design



6

INSET BANDED ROMAN



by. Juniper Home



8

INSIDE MOUNT WITH
BOTTOM BONDING



by. Centered by Design

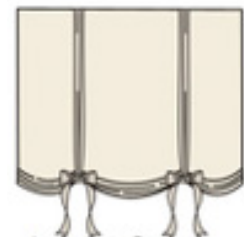


9

PLEATED BUTTERFLY
BALLOON



by. Centered by Design



10

AUSTRIAN OPERA



by. Centered by Design



CENTERED BY DESIGN

ROMAN SHADES TIPS

Roman shades can be mounted inside or outside the window casing, called “inside mount Roman” or “outside mount Roman.”

Outside mount roman shades may have a valance to hide the “clutch,” or mechanism working the shade.

Valance details need to be specified. You must also note if the valance needs a return to hide its mechanism if it doesn't fit flush into the casing.

“Returns” are the pieces of the valance mounted on each side of the shade. You must consider the length of the returns on a valance, or if you need them at all.

Inside mount shades are often made “waterfall” style, with no valance and the clutch hidden behind the shade.

If room darkening is required, blackout lining will create visible pinholes. Inside mount will also show small slits of light.

Outside mount will block more light but also hide the window trim. That can be good or bad depending on the beauty of the window frame.

Cord color should be selected to blend with trim. Cord locations should be specified on the side of shade most easily accessible or uniform across them all.

All workrooms / businesses have different names for shades. Verification of style must be confirmed via imagery or a sketch.

Natural woven Roman shades are one of our favorites. They add texture to a room and come in many varieties.

Trim and tapes can take a plain roman shade from basic to fabulous.

Roller shades are a good solution for a simple look on a limited budget.